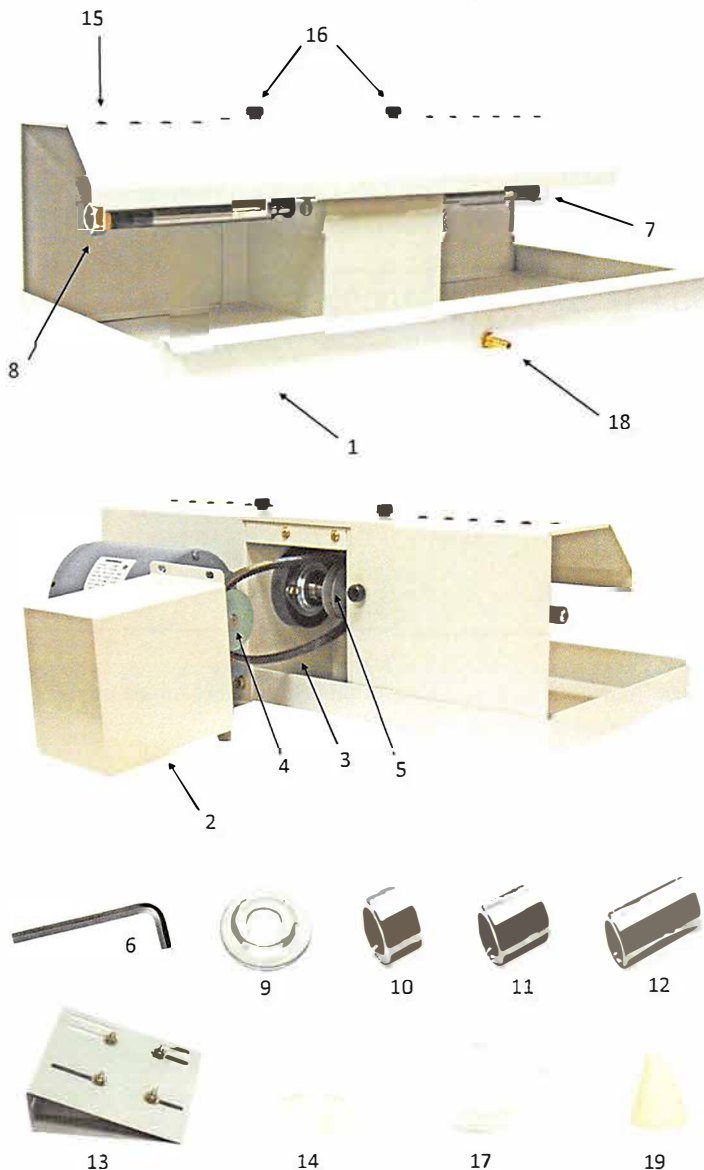


## 6" Grinding & Polishing Arbor Parts List & Instructions



Picture may vary depending on arbor style

### Parts List

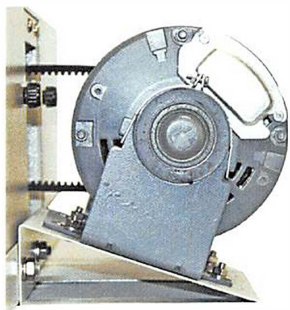


PART #	DESCRIPTION	QUANTITY
1	ARBOR	1
2	BELT COVER	1
3	DRIVE BELT	1
4	MOTOR PULLEY, 2 1/2" X 1/2"	1
5	ARBOR PULLEY, 2 1/2" X 3/4"	1
6	PULLEY WRENCH	1
7	HEX NUT, 3/4-16 RH	1
8	HEX NUT, 3/4-16 LH	1
9	PLATED FLANGE 2" X 3/4"	12
10	1/4" ALUMINUM SPACER	8
11	1/2" ALUMINUM SPACER	4
12	1" ALUMINUM SPACER	4
13	MOTOR MOUNT	1
14	RUBBER FEET	10
15	GROMMETS	10
16	THUMB SCREWS	4
17	DRAIN TUBE	1
18	BRASS VALVE	1
19	DRAIN PLUG	1

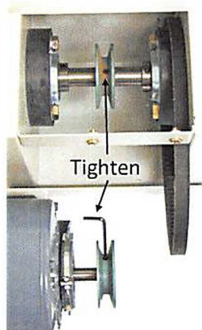
## Set-Up

- Carefully unpack your arbor and included parts. Make sure all parts that are listed on the parts list are included. If any are missing, contact Johnson Brothers Lapidary at 714-771-7007.
- Stick all ten rubber feet on the bottom of your machine, preferably to the corners, and under the motor mount.
- Place your unit on a sturdy table that is clean and in a place that has good air ventilation.
- Optional: If your unit comes with a polish pad, it can be screwed into the end of the shaft on the right side.

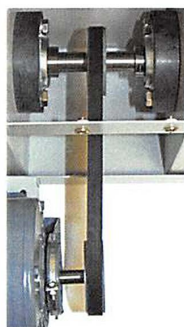
## Motor Install



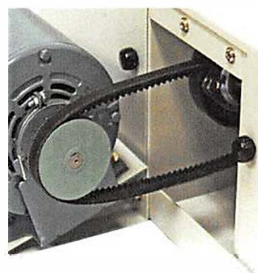
Place motor on motor mount and secure with bolts to the back of arbor.



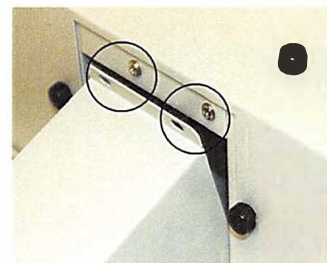
Place motor pulley on motor shaft and tighten both set screws using the pulley wrench.



Belt must be straight.



Adjust the belt tension to about 3/4".



Secure the belt cover by screwing the bolts into the slots.

## Wheel Install

If the wheels are already set-up on your arbor, then there is no need to install your wheels. If they aren't, follow the set-up below:



- Install the wheels on the shaft using the flanges and spacers provided with your machine. When installing flanges, be sure the concave side is facing toward the grinding wheel. Run your wheels in the proper direction if there is any.
- Install the spacers between the wheels. You are provided with a variety of extra spacers to allow you the spacing of your choice. Once you have spaced out your wheels to your needs, tighten the threaded nuts securely.
- You may install additional polishing heads on both sides of your arbor but this is your preference.

## Operating Instructions

- ALWAYS wear eye protection and a dust mask while running your arbor. Do this to prevent serious illness and injury.
- NEVER operate without water. Working on dry wheels can not only damage the wheels but create dust that is harmful to inhale.
- You can either use a gravity feed water system or wheel water spitter to apply water to the wheels while you work.
- Turn on the motor and get your arbor up to speed. Once it is at the speed you want to work at, then apply water to the wheels.
- Once you are done working, turn your water system off and run wheels without water to dry properly.
- Drain your unit to remove contaminated water. Wipe dry and keep your unit clean after use. Be sure to drain all water completely or the machine may rust.

**Note:** It is normal for the arbor to vibrate and make noise when the motor is turned on.

To help with your drainage system, connect the drain tube to the brass valve. To make a better seal, use Teflon or plumbers tape around the



Brass Valve